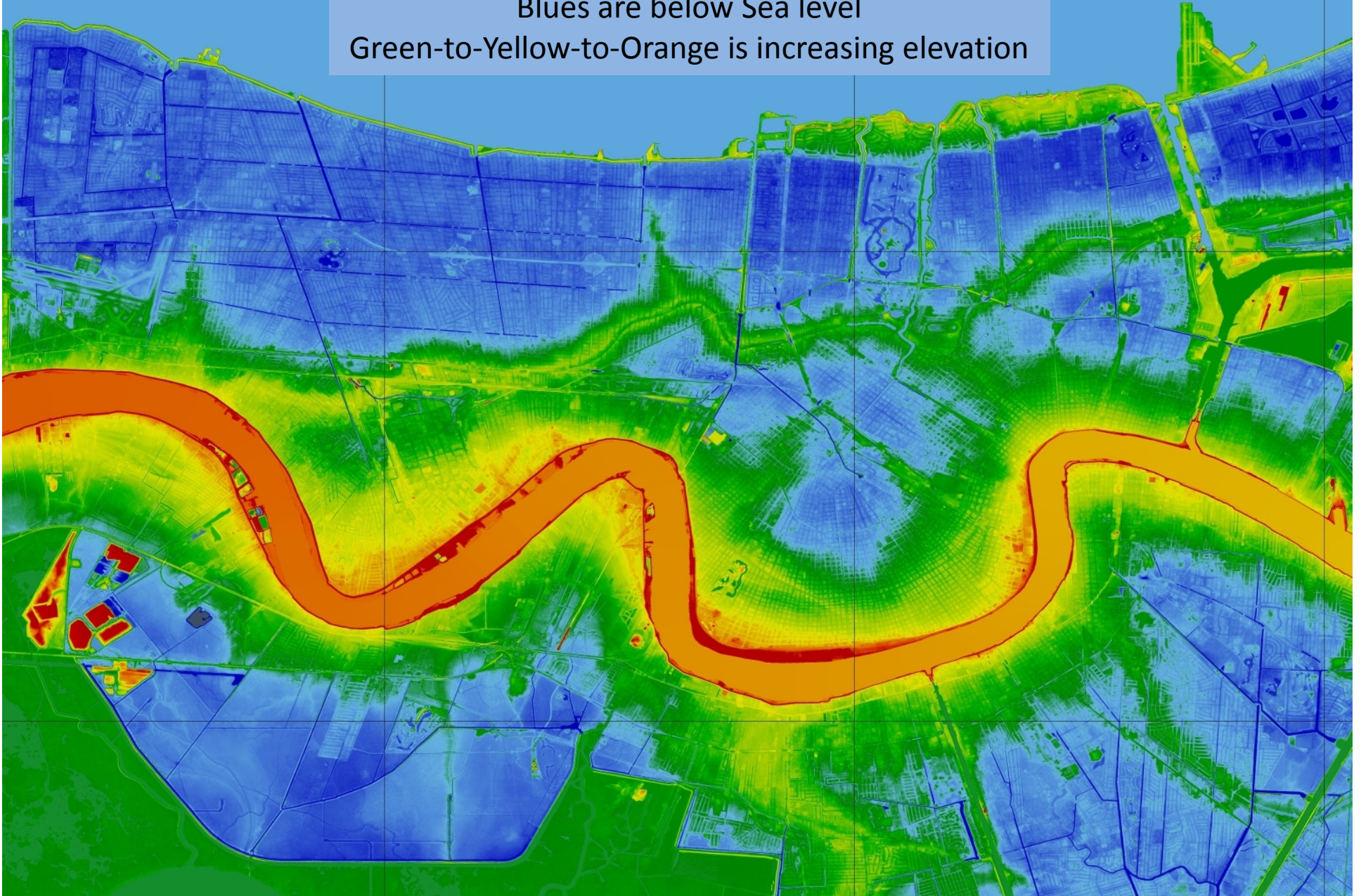


High Resolution Elevation Map
Blues are below Sea level
Green-to-Yellow-to-Orange is increasing elevation

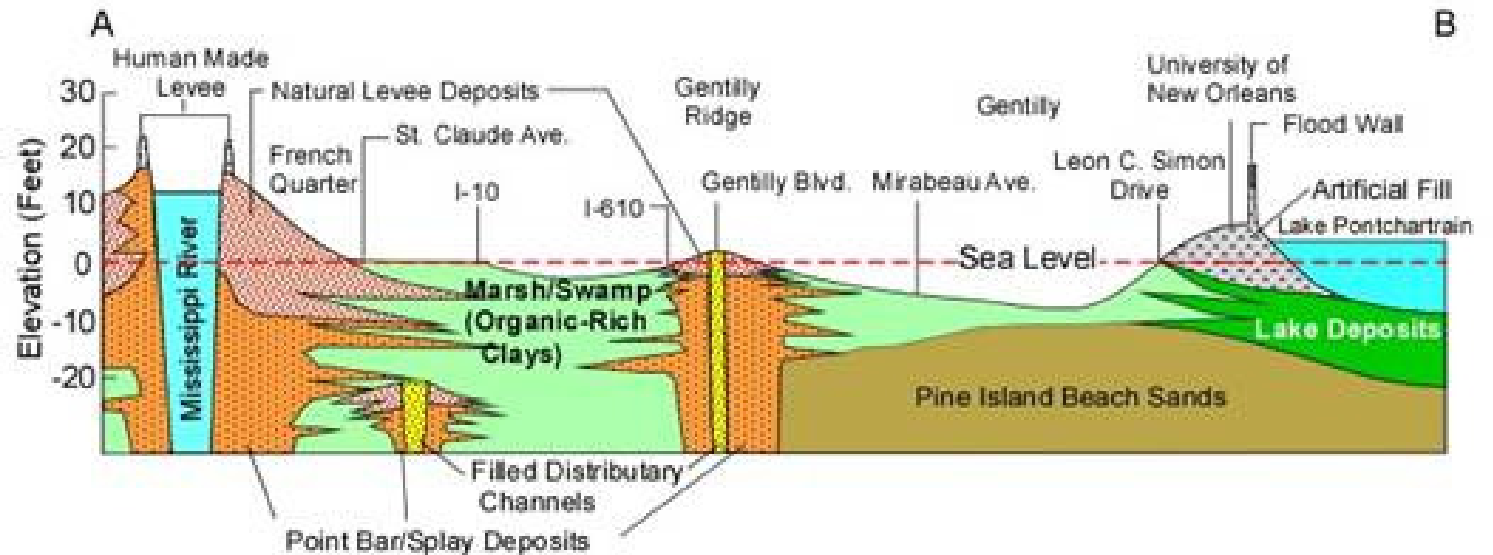
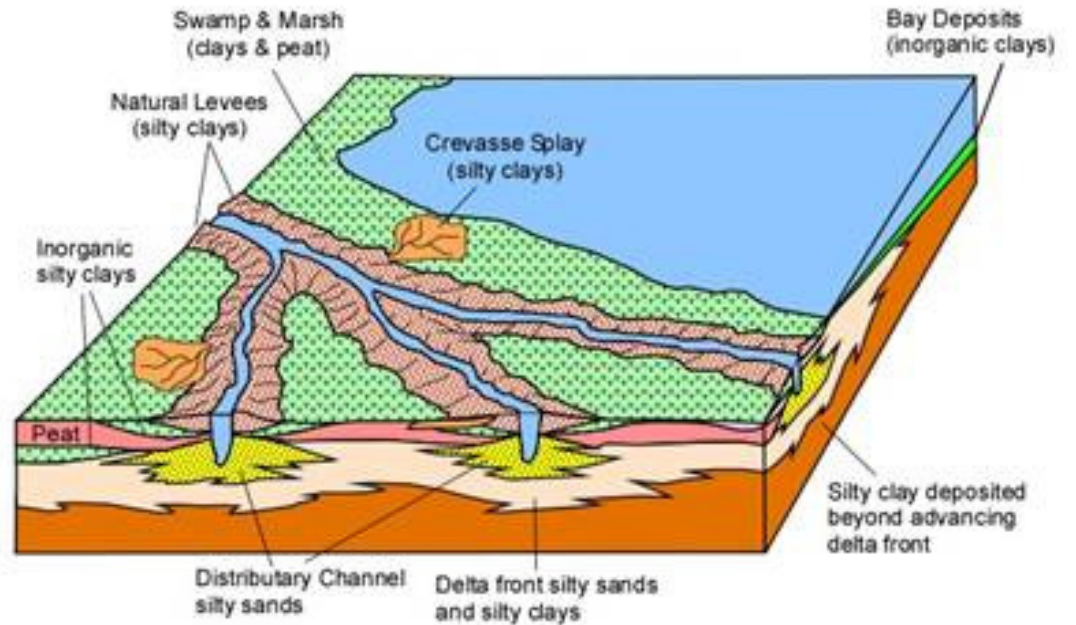


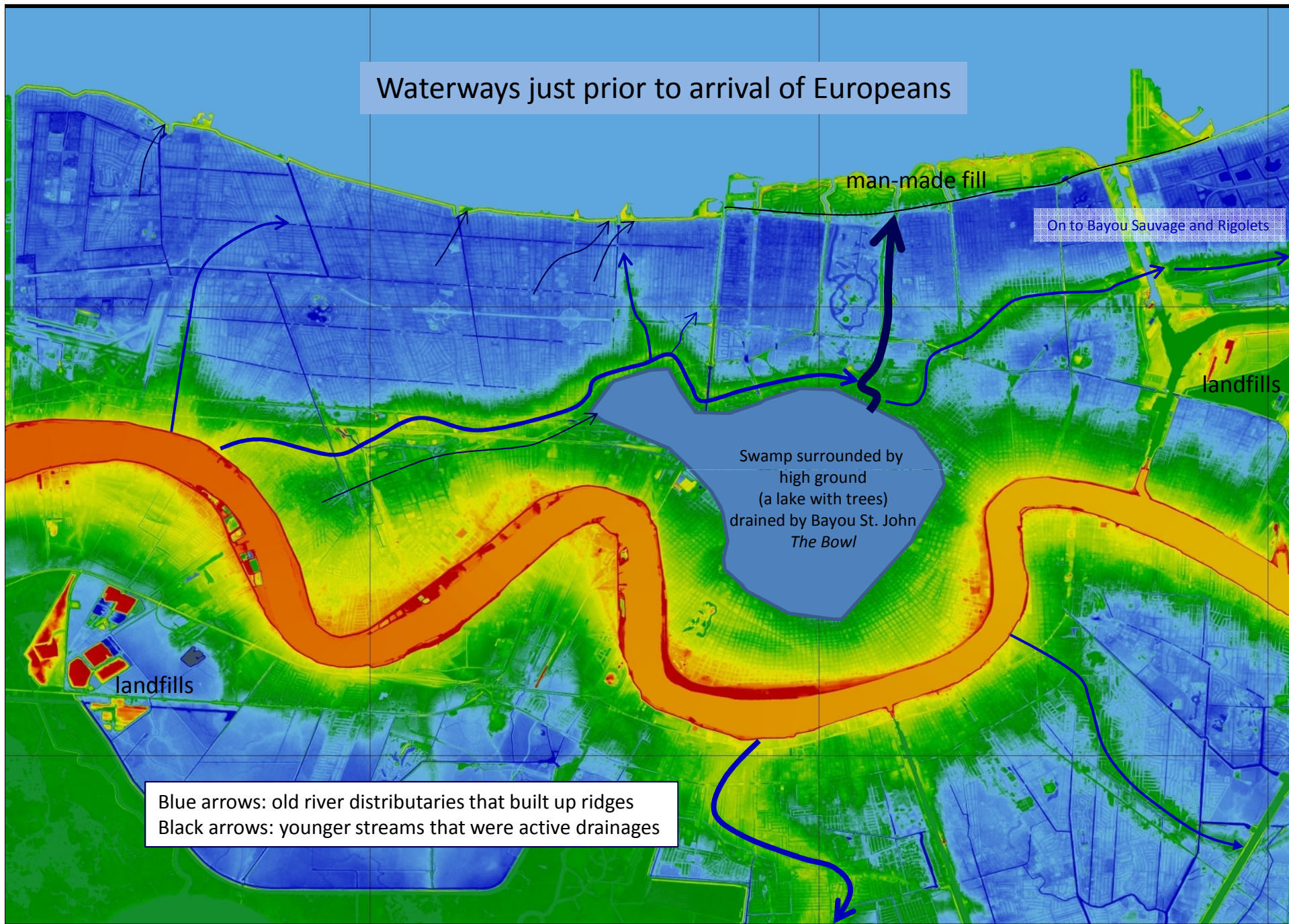
Metairie Bayou was a distributary channel of the Mississippi River,
 What we call the Metairie-Gentilly Ridge is it's 'natural levees'

Bayou Sauvage is an extension of the waterway, and it built land out to the Rigolets. Mostly active during 1000 to 3000 years ago.

Rivers tend to split at their deltas, and eventually one branch dominates as the system continues to build out.

Natural levees flank these distributaries, building up when the annual floods deposit another layer of sediment. They rise a few feet above sea level. The main river builds natural levees up about 15 feet.





Quiz: How did early settlers know where to build above sealevel?

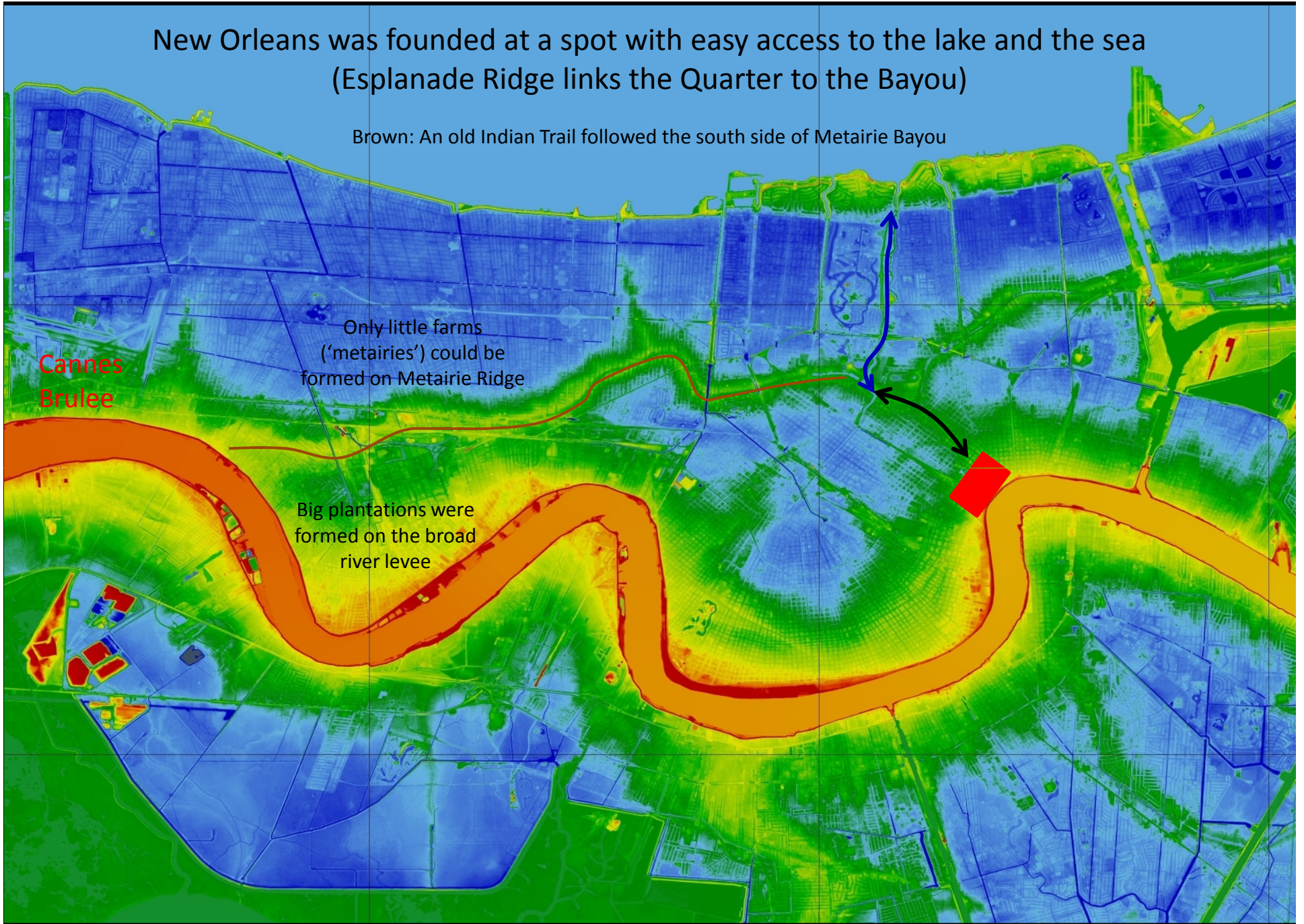
New Orleans was founded at a spot with easy access to the lake and the sea
(Esplanade Ridge links the Quarter to the Bayou)

Brown: An old Indian Trail followed the south side of Metairie Bayou

Only little farms
(‘metairies’) could be
formed on Metairie Ridge

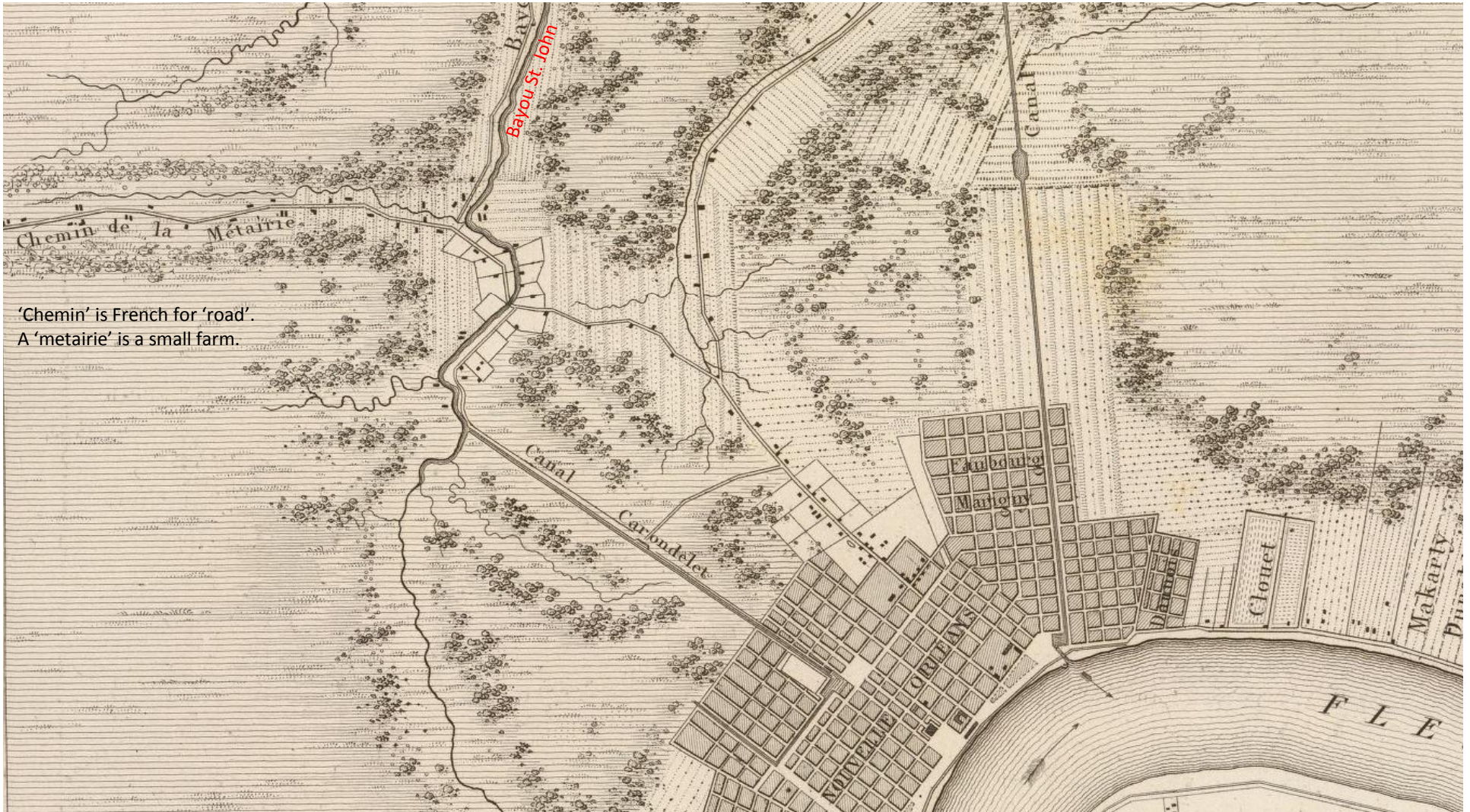
Big plantations were
formed on the broad
river levee

Cannes
Brulee



This is a nicely-detailed old map . Metairie Road comes in from the left, just south of the remnants of Metairie Bayou, which flows into Bayou St. John at what is now the southeast corner of City Park. Most of the section of Metairie Road that is on this map is now known as 'City Park Avenue'. Note the little farms along Metairie Ridge.

This map was made before the New Basin Canal was dug (it would be on the left). The Carondelet Canal connected the city to Bayou St. John (and to the lake and to the Gulf). 'Basin Street' got its name from the turning basin at the end of this canal. They never did dig a canal at Canal Street; that's a common myth!

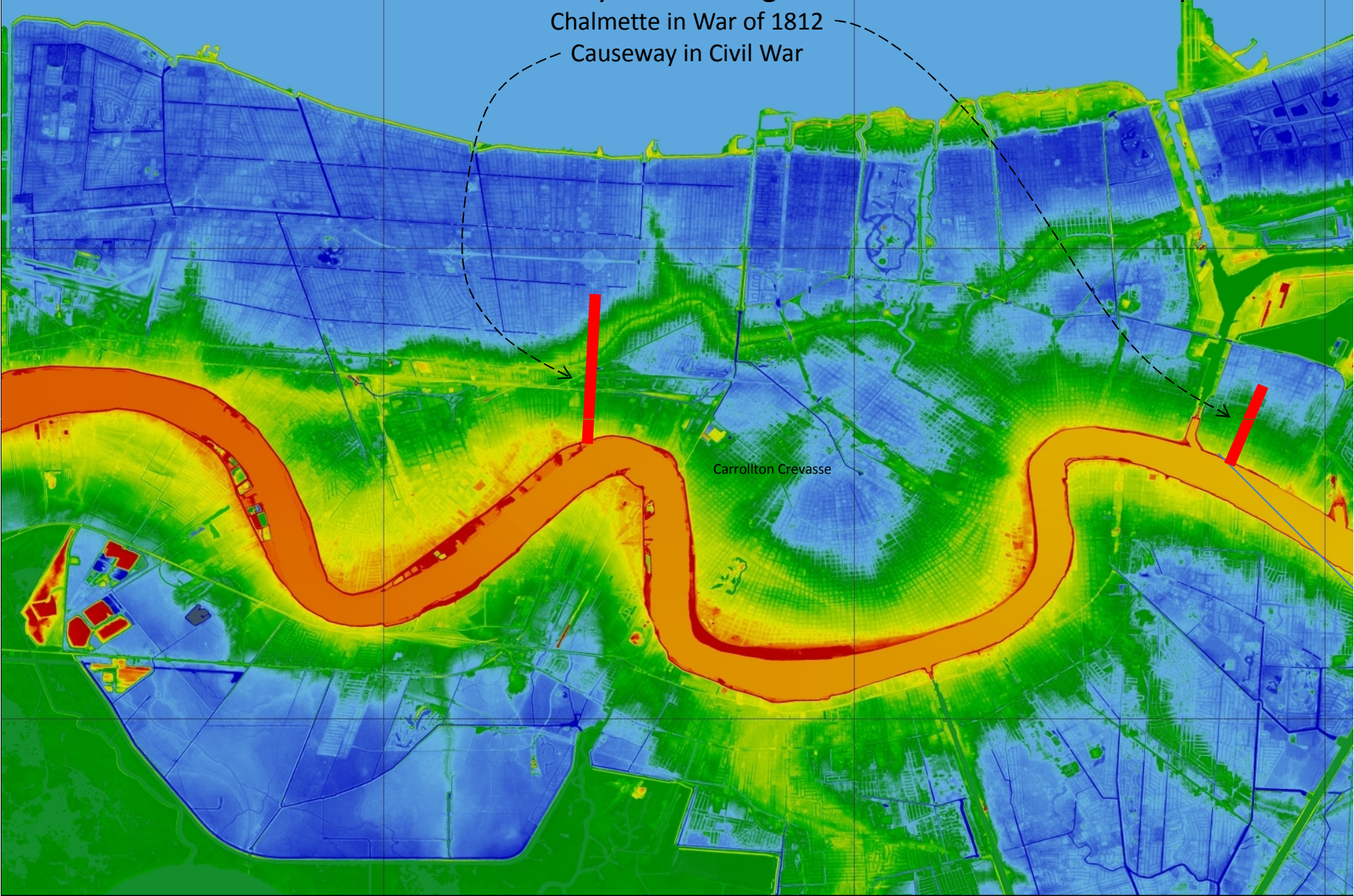


'Chemin' is French for 'road'.
A 'metairie' is a small farm.

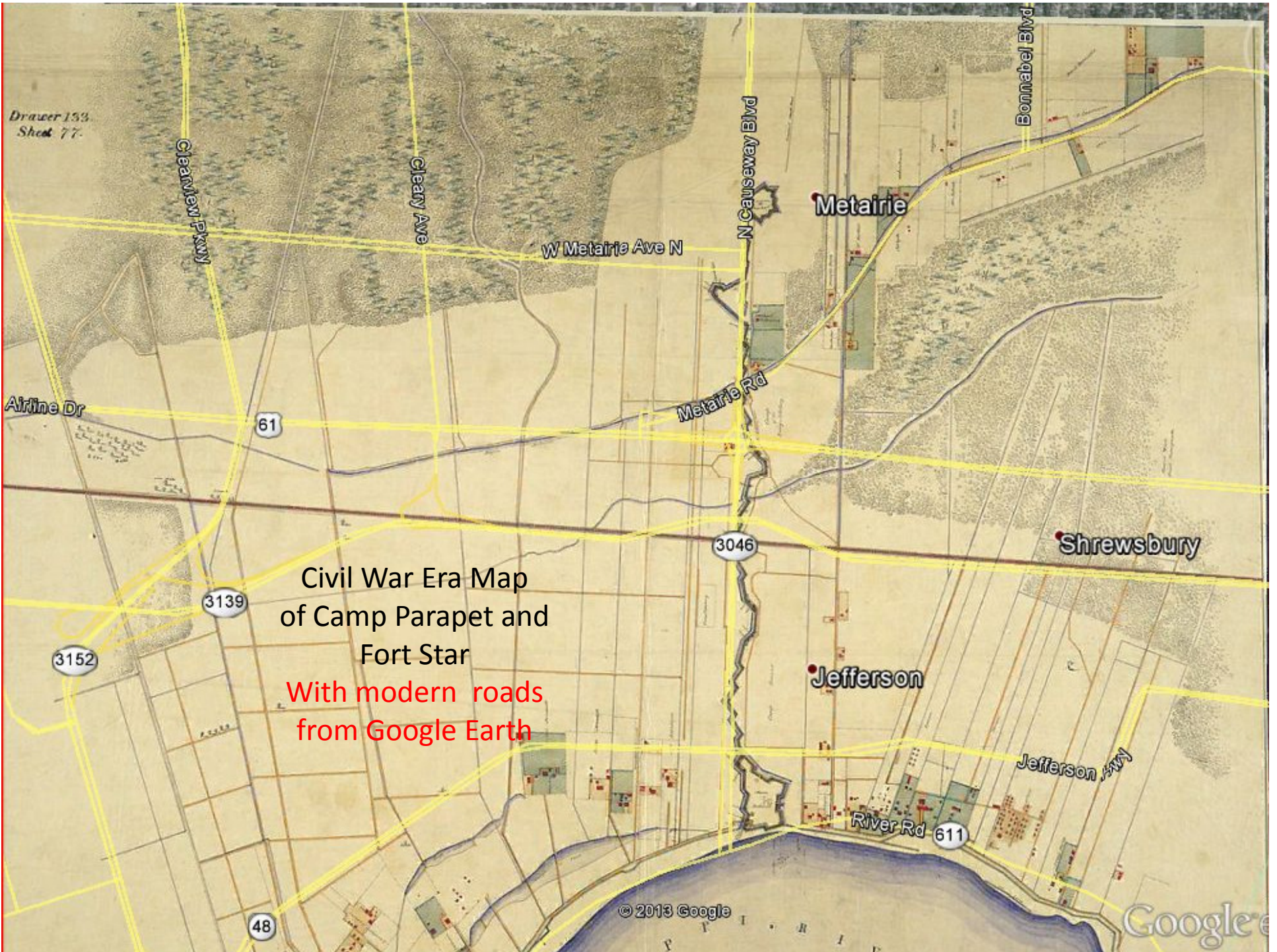
Fortifications to defend the City tended to go from the River to the swamp

Chalmette in War of 1812

Causeway in Civil War



Carrollton Crevasse



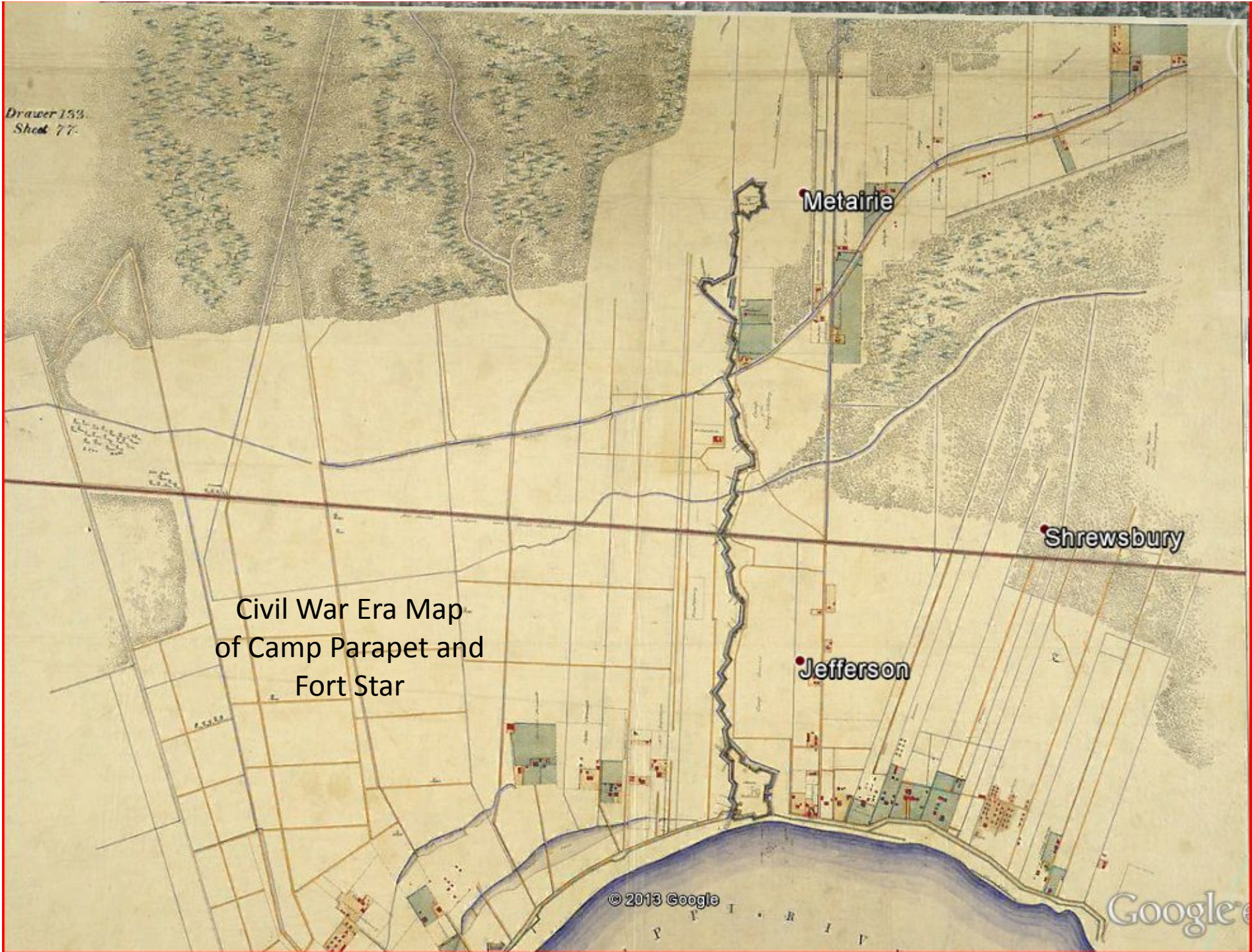
Drawer 153
Sheet 77

Civil War Era Map
of Camp Parapet and
Fort Star
With modern roads
from Google Earth

© 2013 Google

Google

Drawer 153
Sheet 77



Civil War Era Map
of Camp Parapet and
Fort Star

Metairie

Shrewsbury

Jefferson

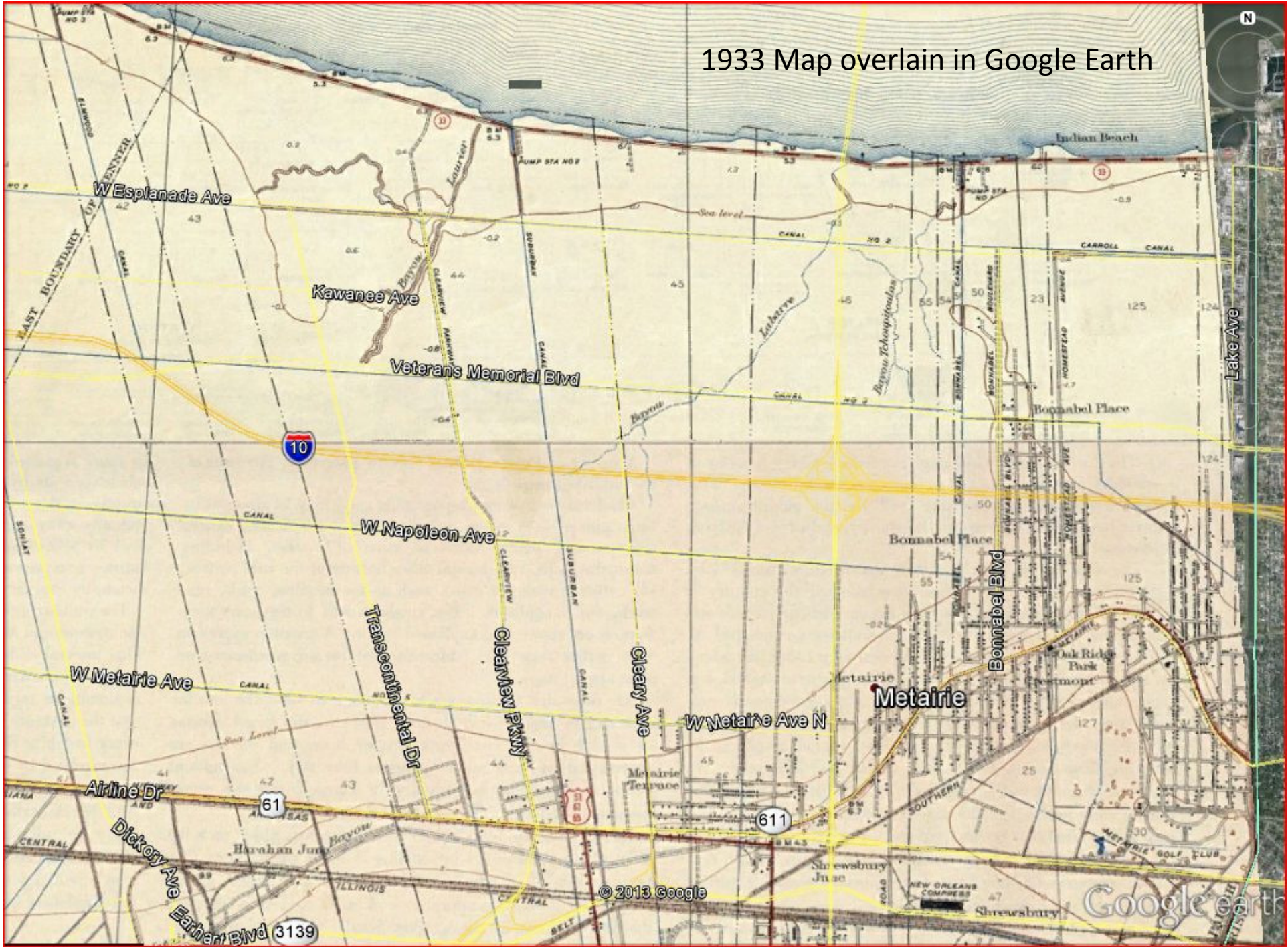
© 2013 Google

Google

1890 Map Overlay on Google Earth



1933 Map overlain in Google Earth



Circa 1960 aerial photographs



Metairie

Google earth

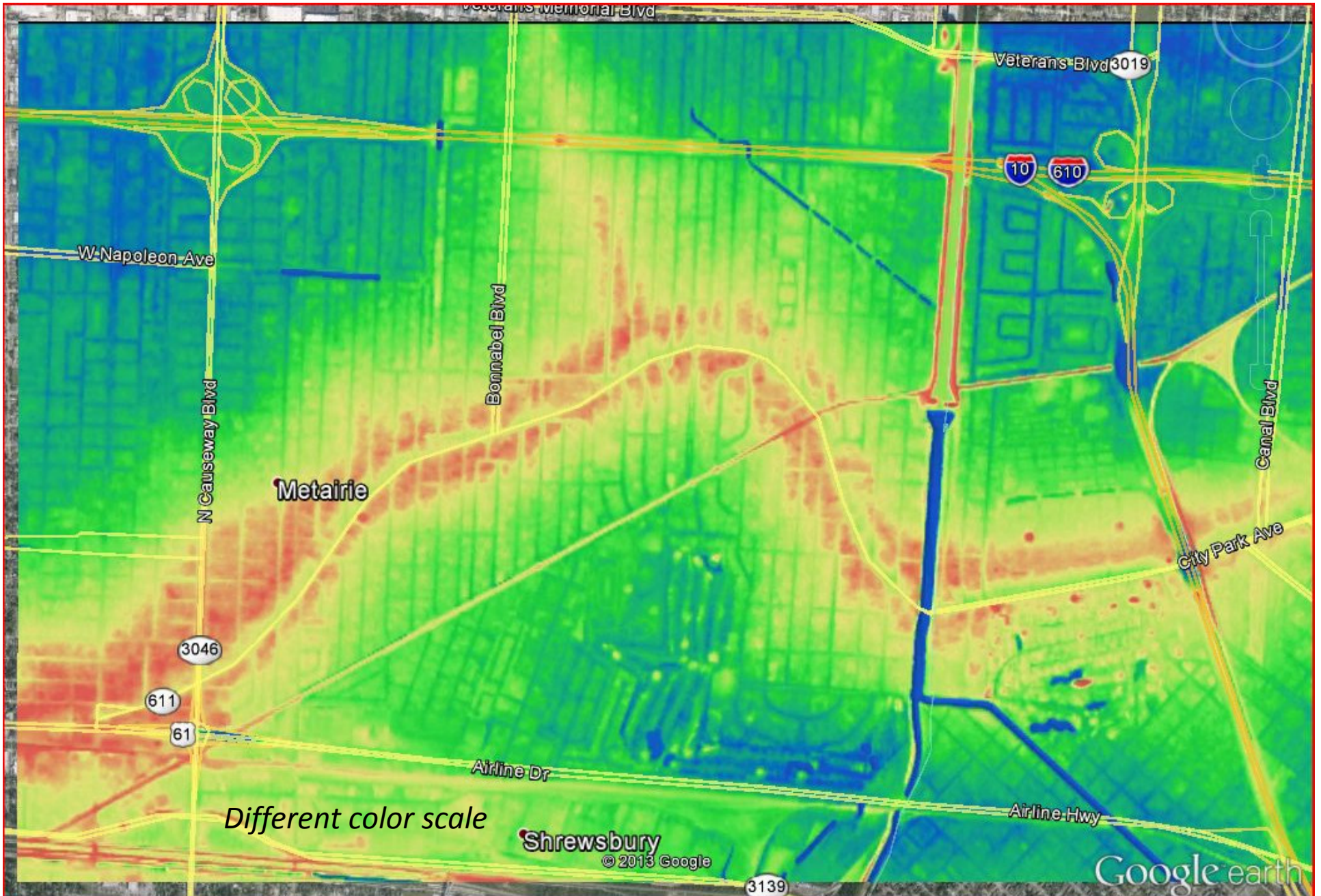
Tour Guide

1998

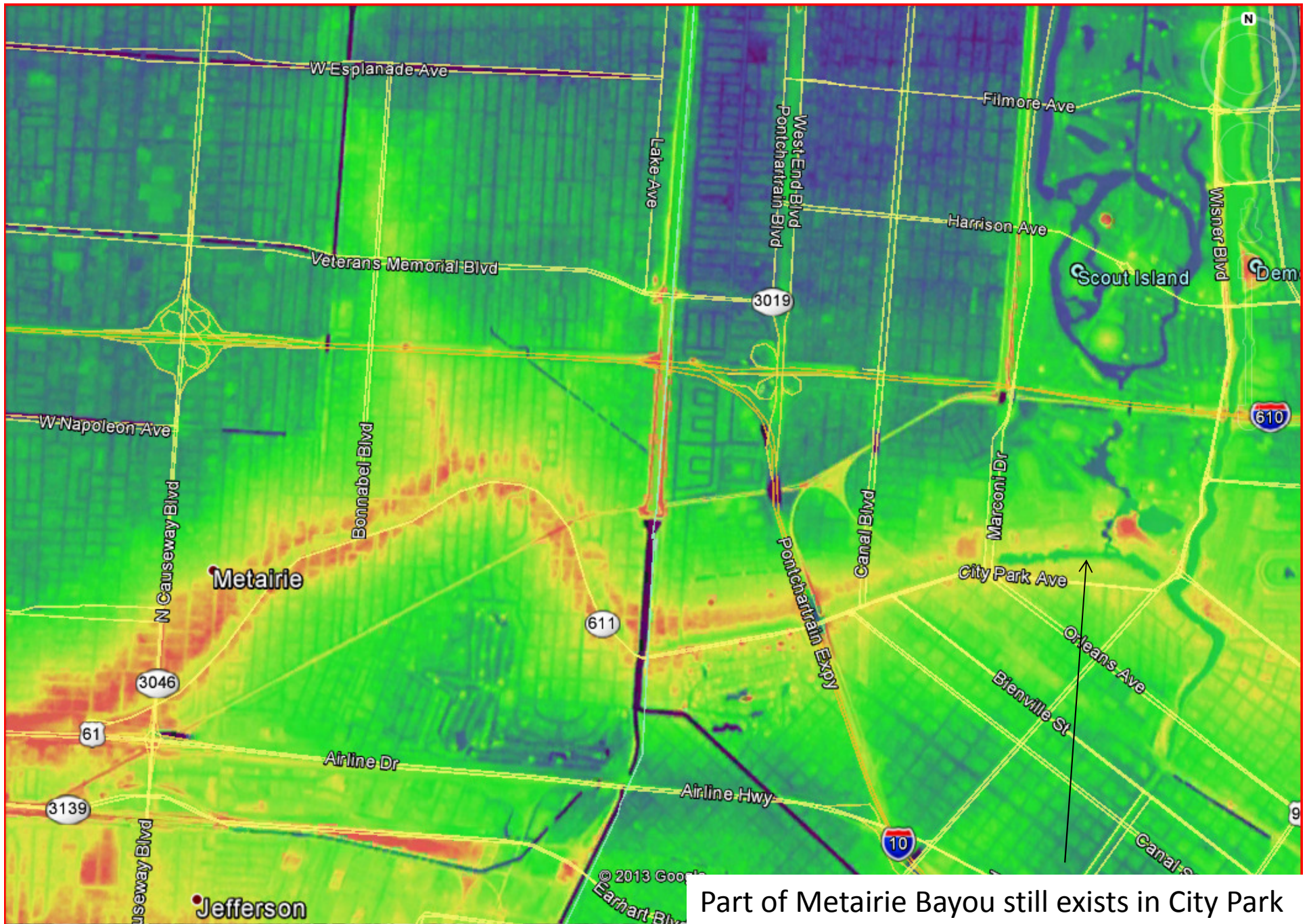
Imagery Date: 10/5/2012 lat 30.000851° lon -90.164804° elev 0 ft eye alt 18702 ft

© 2013 Google

Today Metairie Road runs on the south side of the depression where the bayou once flowed



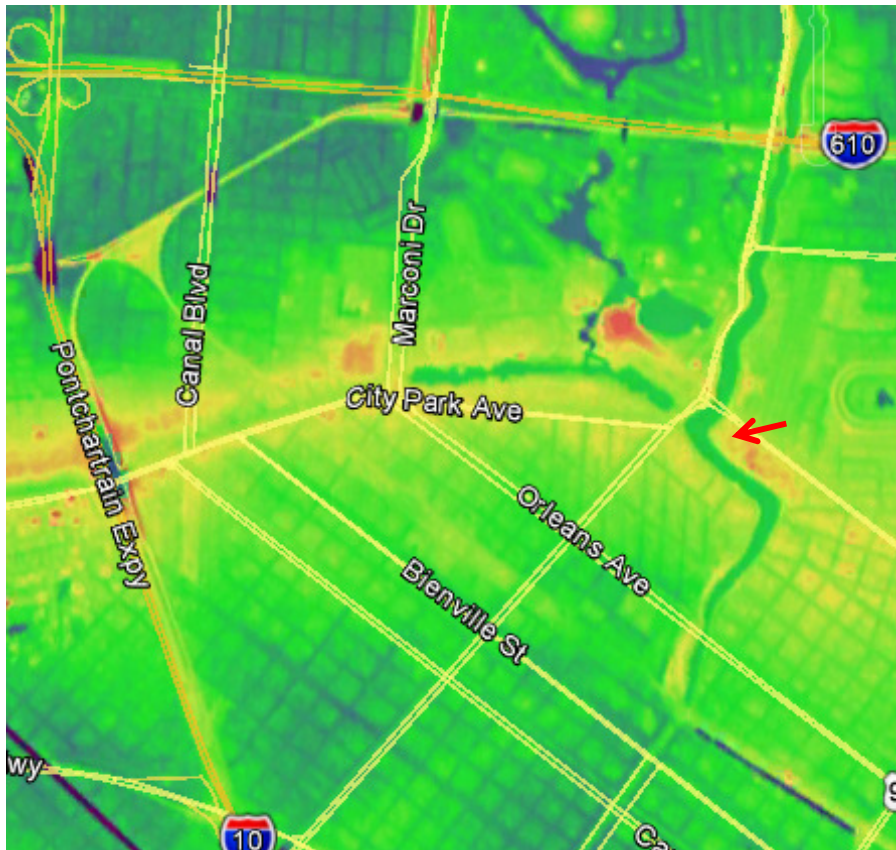
Zoomed-out to include the cemeteries, Delgado, City Park, and Bayou St. John



Part of Metairie Bayou still exists in City Park

The old map we saw earlier agrees quite well with the modern map

Arrow  points to where Metairie Bayou intersected Bayou St. John



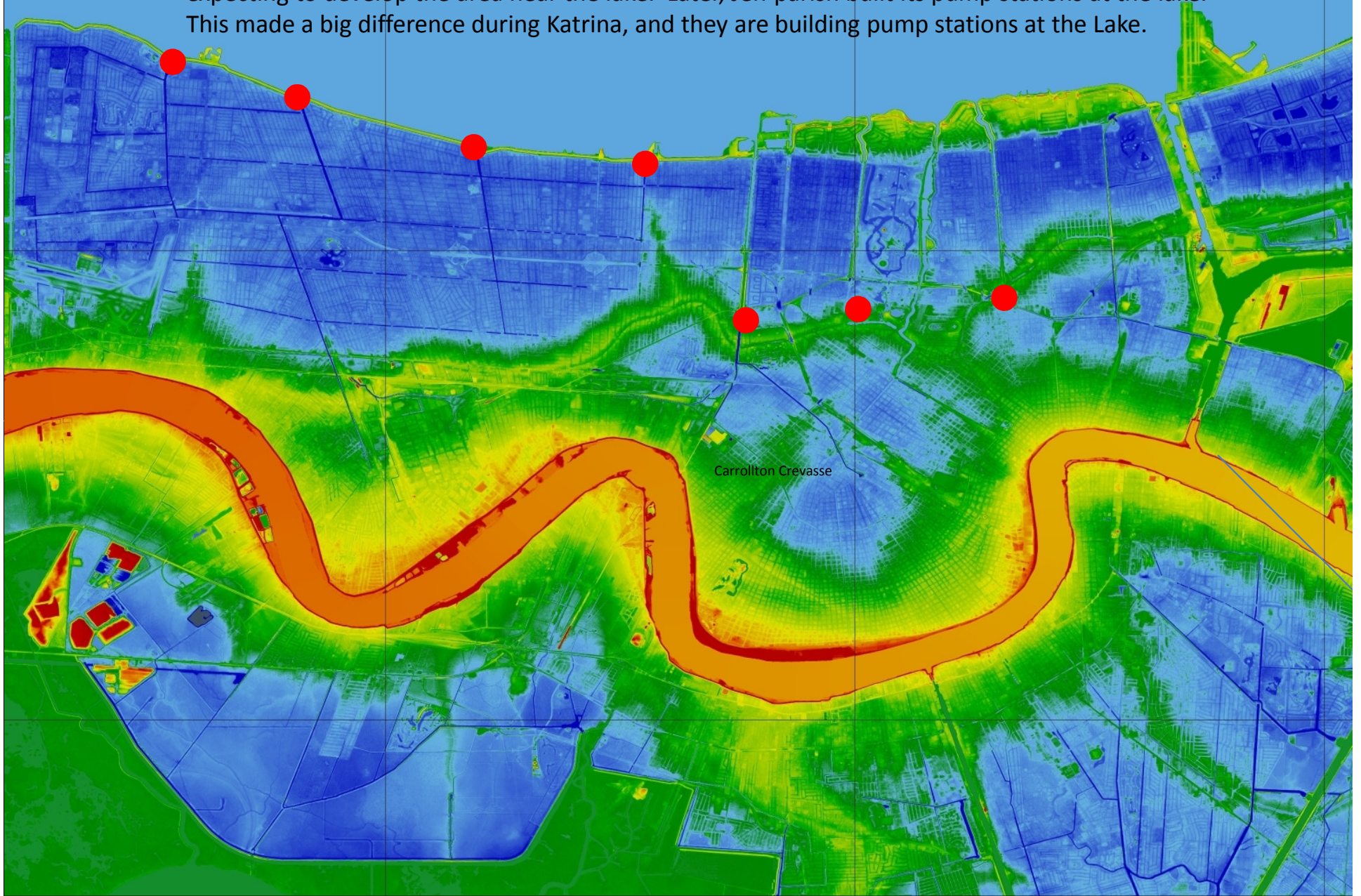
Some of you probably remember when it ran along the cemetery
(not to mention remembering the New Basin Canal)



Google Streetview from today – note the mausoleum with the dome in both pictures

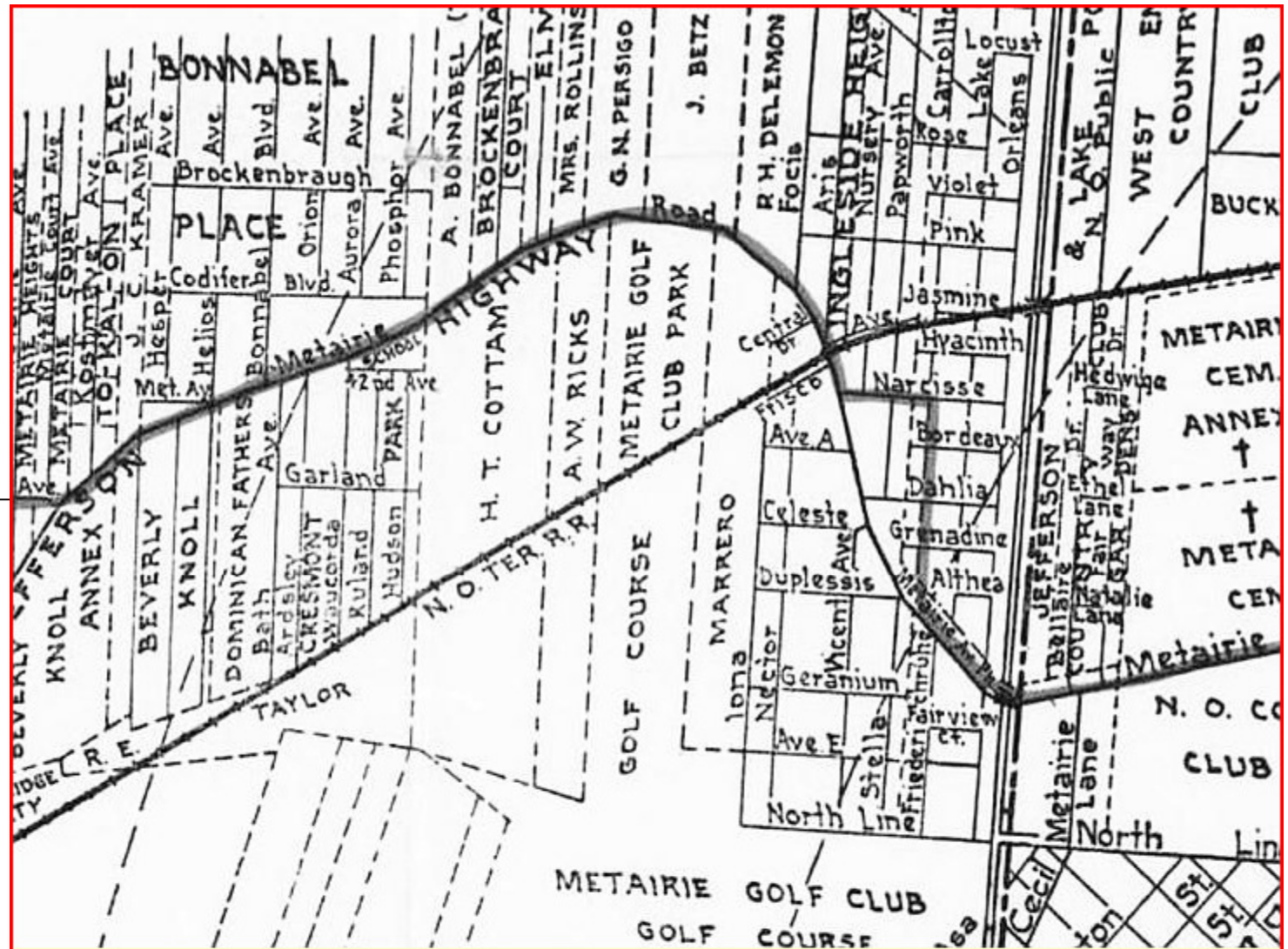


New Orleans built its original pump stations along the Metairie/Gentilly Ridge, apparently not expecting to develop the area near the lake. Later, Jeff parish built its pump stations at the lake. This made a big difference during Katrina, and they are building pump stations at the Lake.



The Metairie Streetcar

Fagot to Labarre to Met Rd.
To Shrewsbury (Severn) ←



In 1916 the Napoleon Avenue streetcar line was extended from the 17th Street Canal to run along Metairie Road to Shrewsbury Road. It was known as the Blue Line. As had happened in the city, public transportation led to new interest and growth in the Old Metairie area. As automobiles became popular and affordable a ride out to Metairie, long considered "the country", became less daunting. Pictured is a map of the streetcar route. In 1918 the Papworth family developed the Metairie Ridge Subdivision (top right) near land they used for a plant nursery; a 1954 business advertisement appears below. Mr. Papworth is said to have planted the oak trees along Metairie Road from Avenue A to Metairie's Carrollton Avenue. (Courtesy the Library of Congress and the Jefferson Parish Yearly Review)